

**HRH2 Antibody (Center)**  
**Affinity Purified Rabbit Polyclonal Antibody (Pab)**  
**Catalog # AP14970c****Specification**

---

**HRH2 Antibody (Center) - Product Information**

Application	WB,E
Primary Accession	<a href="#">P25021</a>
Other Accession	<a href="#">NP_071640.1</a>
Reactivity	Human
Host	Rabbit
Clonality	Polyclonal
Isotype	Rabbit IgG
Calculated MW	40098
Antigen Region	189-218

**HRH2 Antibody (Center) - Additional Information****Gene ID** 3274**Other Names**

Histamine H2 receptor, H2R, HH2R, Gastric receptor I, HRH2

**Target/Specificity**

This HRH2 antibody is generated from rabbits immunized with a KLH conjugated synthetic peptide between 189-218 amino acids from the Central region of human HRH2.

**Dilution**

WB~~1:1000

E~~Use at an assay dependent concentration.

**Format**

Purified polyclonal antibody supplied in PBS with 0.09% (W/V) sodium azide. This antibody is purified through a protein A column, followed by peptide affinity purification.

**Storage**

Maintain refrigerated at 2-8°C for up to 2 weeks. For long term storage store at -20°C in small aliquots to prevent freeze-thaw cycles.

**Precautions**

HRH2 Antibody (Center) is for research use only and not for use in diagnostic or therapeutic procedures.

**HRH2 Antibody (Center) - Protein Information****Name** HRH2**Function** G-protein coupled receptor for histamine, primarily mediating gastric acid secretion.

Predominantly expressed in the gastric mucosa, couples to G(s) G alpha proteins upon histamine binding, leading to activation of adenylate cyclase and increased intracellular cyclic AMP (cAMP) levels (PubMed:[38647423](#), PubMed:[39333117](#)). This signaling cascade stimulates parietal cells to secrete hydrochloric acid, playing a key role in digestive physiology. Also expressed in other tissues, including the heart and central nervous system, where it may contribute to cardiac stimulation and modulate neurotransmitter release (By similarity).

#### Cellular Location

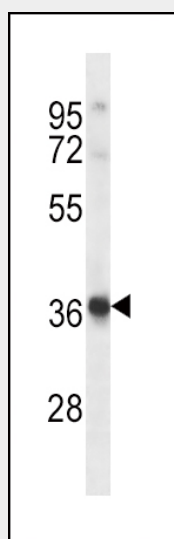
Cell membrane; Multi-pass membrane protein.

### HRH2 Antibody (Center) - Protocols

Provided below are standard protocols that you may find useful for product applications.

- [Western Blot](#)
- [Blocking Peptides](#)
- [Dot Blot](#)
- [Immunohistochemistry](#)
- [Immunofluorescence](#)
- [Immunoprecipitation](#)
- [Flow Cytometry](#)
- [Cell Culture](#)

### HRH2 Antibody (Center) - Images



HRH2 Antibody (Center) (Cat. #AP14970c) western blot analysis in Uterus tissue lysates (35ug/lane). This demonstrates the HRH2 antibody detected the HRH2 protein (arrow).

### HRH2 Antibody (Center) - Background

Histamine is a ubiquitous messenger molecule released from mast cells, enterochromaffin-like cells, and neurons. Its various actions are mediated by histamine receptors H1, H2, H3 and H4. Histamine receptor H2 belongs to the family 1 of G protein-coupled receptors. It is an integral membrane protein and stimulates gastric acid secretion. It also regulates gastrointestinal motility and intestinal secretion and is thought to be involved in regulating cell growth and differentiation. Alternatively spliced transcript variants encoding different isoforms have been found for this gene.

**HRH2 Antibody (Center) - References**

Bailey, S.D., et al. Diabetes Care 33(10):2250-2253(2010) Ruano, G., et al. Pharmacogenomics 11(7):959-971(2010) Davila, S., et al. Genes Immun. 11(3):232-238(2010) Szukiewicz, D., et al. Inflamm. Res. 59 SUPPL 2, S205-S207 (2010) : Talmud, P.J., et al. Am. J. Hum. Genet. 85(5):628-642(2009)

**HRH2 Antibody (Center) - Citations**

- [Histamine deficiency aggravates cardiac injury through miR-206/216b-Atg13 axis-mediated autophagic-dependant apoptosis.](#)